

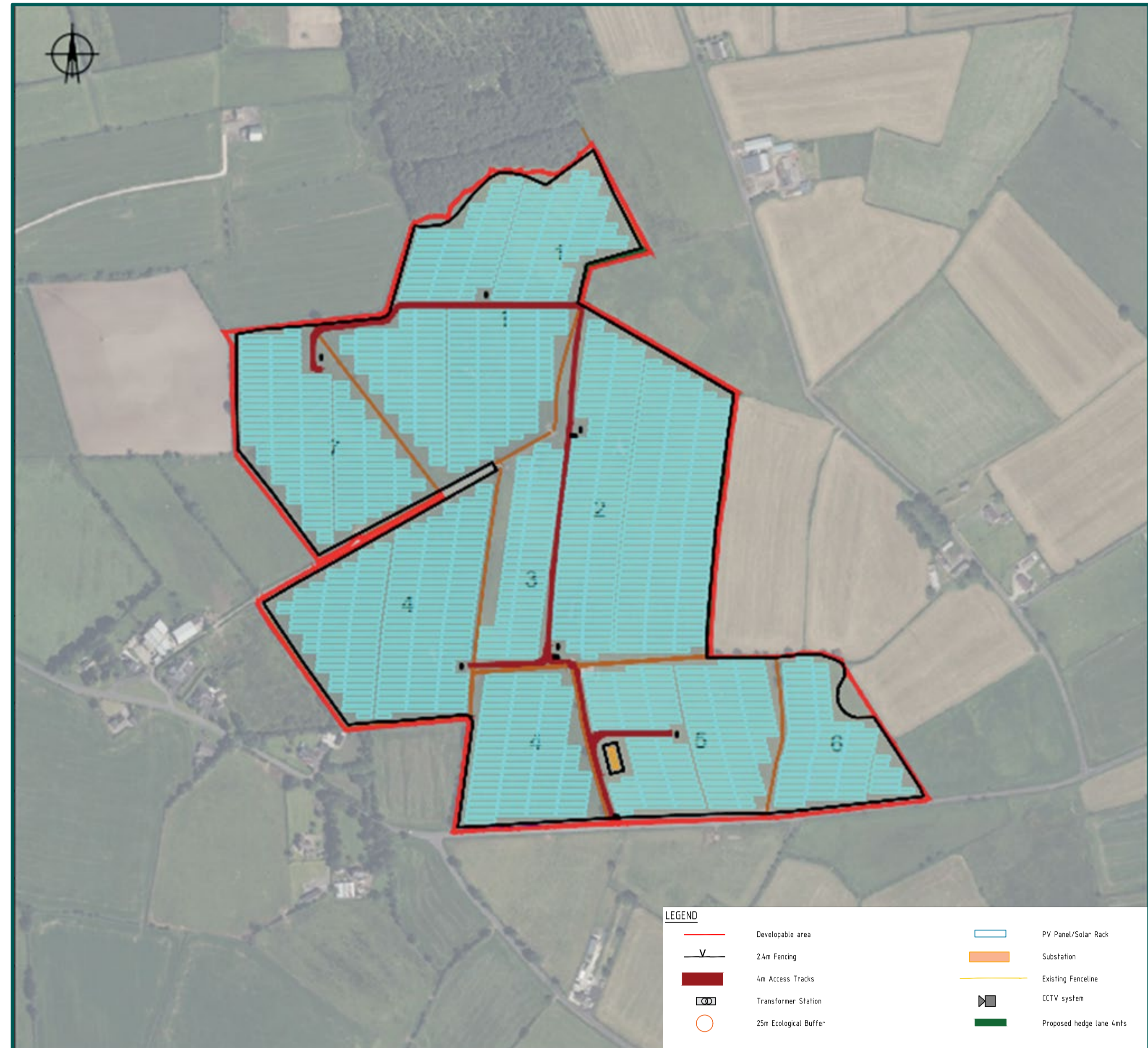
What is being proposed?

Proposed Development

Solar farm and associated infrastructure

The proposed Ballyleagry Solar Farm will have an output of circa 29 MW and will include the following associated infrastructure:

- Ground mounted solar PV panels
- Inverter/transformer cabins
- Substation
- Access to Ballyleagry Road
- Internal access roads
- CCTV cameras
- Security fencing
- Temporary construction compound
- Landscaping
- Grid connection
- Ancillary site works



Following receipt of planning permission, NIE Networks will dictate the location the solar farm connects to the grid and the route the connection takes.

However, we have provided an indicative assessment for a connection at the existing substation located on Ballyavelin Road, Limavady.

The construction period for the project is expected to be approximately 9-12 months and when complete the solar farm will be operational for a period of 40 years.

When the project is decommissioned, all structures will be removed and the land restored.

